



Bulletin 13

Occasional news and snippets for participants, leaders, and supporters of Malawi 2024

April 2024

Project sites and area

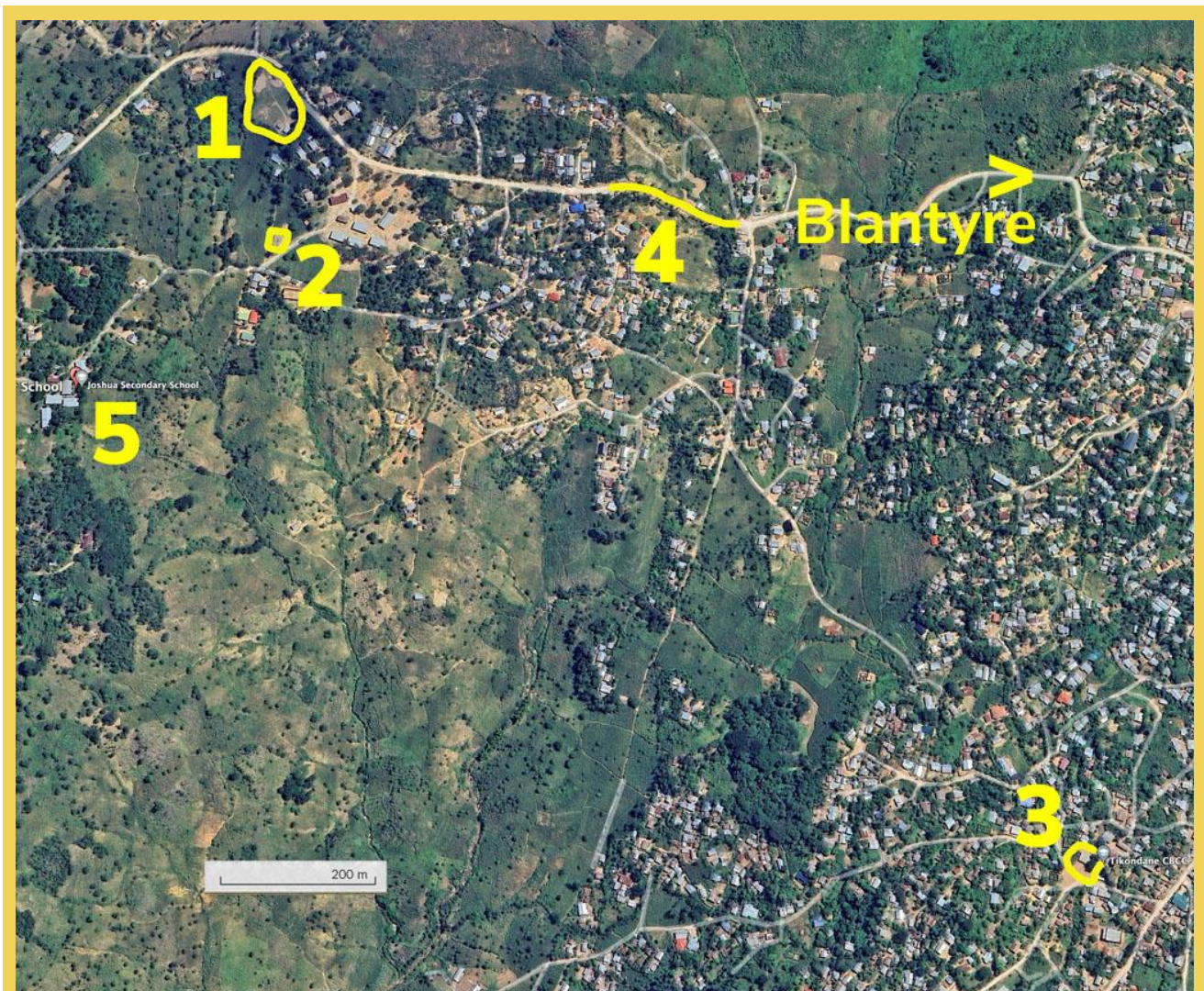
The aerial map below shows some of the locations that will become familiar when in Malawi.

- [1] The main project site (new build) and camping area.
- [2] The hand water pump is a 5 minutes short walk from the main project site.
- [3] The existing Joshua Care Centre (requiring refurbishment) is approximately a 30–45 minutes walk from the camp site.

[4] The drive to Blantyre city centre is approximately 30–45 minutes on both rough track and tarred road. The highlighted part of the rough track is a steep hill and only accessible with a 4x4 drive vehicle!

[5] The area can be explored on Google Earth by entering 'Joshua Secondary School, Malawi' in the search box.

Other places to view whilst exploring the wider area of Malawi on Google Earth are 'Kutchire Lodge' (safari), 'Cape Maclear' (Lake Malawi) and 'Mt Mulanje'.



Travel vaccinations

Although the Malawi 2024 team are not in a position to advise on specific travel vaccinations, it's generally accepted these should be completed approximately four weeks before departure. Hopefully, all participants are now well on their way to completing their 'jabs'!

The recently published FAQs (available on our web page) provides further information on some 'health' matters.

Fundraising

An amazing amount of money has been raised for both individual costs as well as for the central projects and equipment.

Approximately £24,000 has been achieved towards the £29,000 central projects target. In addition, £3,500 has been granted towards the purchase of new tents. A total of £27,500 in grants and fundraising for central projects and equipment.



Having made more than 80 individual grant applications to various trusts and charities, along with a similar number of general enquiries, this route to funding has been exhausted!

The fundraising team will be very grateful for any leads to achieve the final £5,000 for the central projects. The team can be contacted via the email address in the panel to the right.

Next participant/parent webinar

The next **webinar** will take place on **Monday 29 April** starting promptly at 19.30 hours. The link for the webinar will be sent direct via email.

Key dates and links!

Advance Passenger Information – required by Friday 19 April (see separate email).

Participant/parent webinar takes place on **Monday 29 April** (see above).

Leader (only) Briefing – Sunday 12 May.

Final payment of £900 is due on **30 May.**

Final training weekend takes place during the weekend of **21–23 June** at Dorney Wood campsite.

New diary date

Final Briefing – for participants and parents
Tuesday 2 July (details to follow).

Please share our JustGiving link (fundraising for central projects) as widely as possible:
www.justgiving.com/campaign/projectafrica2024



Useful links

[Online Shop](#)

[Malawi 2024 web page](#)

[Malawi 2024 Facebook page \(public\)](#)

[Malawi 2024 Facebook page \(group\)](#)

[Project Africa Facebook page](#)

For information and general enquiries:
africa2024@berkshirescouts.org.uk